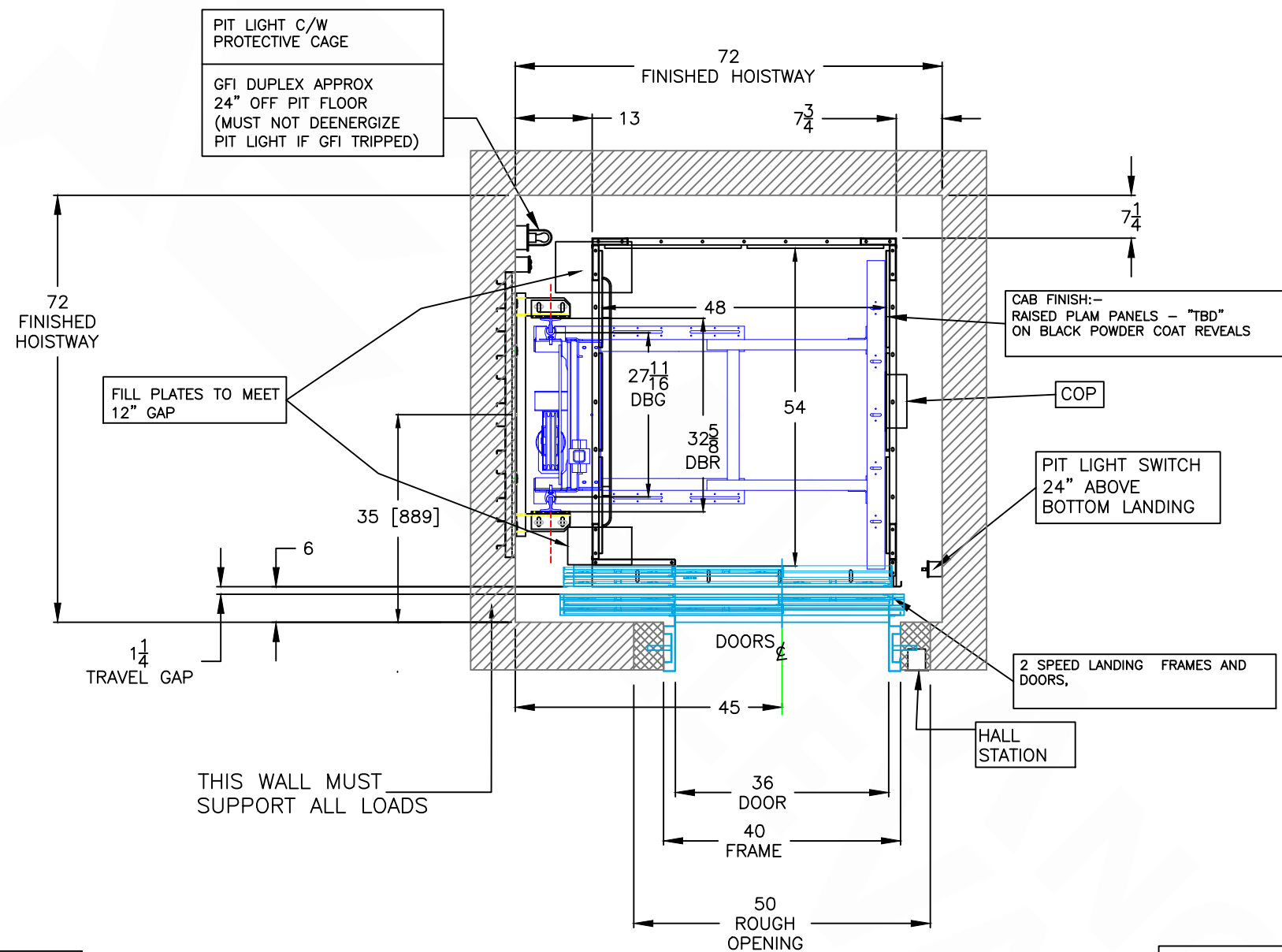


48x54
 INLINE



PIT LIGHT C/W
 PROTECTIVE CAGE
 GFI DUPLEX APPROX
 24" OFF PIT FLOOR
 (MUST NOT DEENERGIZE
 PIT LIGHT IF GFI TRIPPED)

CAB FINISH:-
 RAISED PLAM PANELS - "TBD"
 ON BLACK POWDER COAT REVEALS

FILL PLATES TO MEET
 12" GAP

PIT LIGHT SWITCH
 24" ABOVE
 BOTTOM LANDING

2 SPEED LANDING FRAMES AND
 DOORS,

THIS WALL MUST
 SUPPORT ALL LOADS

HALL
 STATION

FILL PLATES AND
 FASCIA NOT PROVIDED
 UNLESS ORDERED FROM
 ORDER FORM

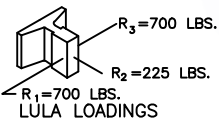
M:\SS PACKAGES\z stuff\CEI.bmp

1261 INDUSTRIAL ROAD
 CAMBRIDGE ONTARIO
 N3H 4W3

CAMBRIDGE ELEVATING INC. RESERVES THE RIGHT TO ALTER
 DRAWINGS WITHOUT NOTICE.

A 50" wide X 92" high ROUGH OPENING IS REQUIRED AT
 THE CENTERLINE AS SHOWN ON LAYOUT FOR LANDING DOOR
 FRAMES. GENERAL CONTRACTOR TO FILL IN AROUND DOOR
 FRAMES AFTER FRAMES HAVE BEEN INSTALLED BY CEI

* CAMBRIDGE ELEVATING INC. IS NOT RESPONSIBLE FOR THE
 STRUCTURAL DESIGN OF THE BUILDING AND ITS ABILITY
 TO SUPPORT THE ELEVATOR LOADS AND/OR REACTIONS.
 * THIS LULA ELEVATOR CONFORMS TO:
 ASME A17.1-(CODE YEAR)



PROJECT:	
LOCATION:	
CONTRACTOR:	
DRN BY: NB	DWG NO.:
SCALE NTS	